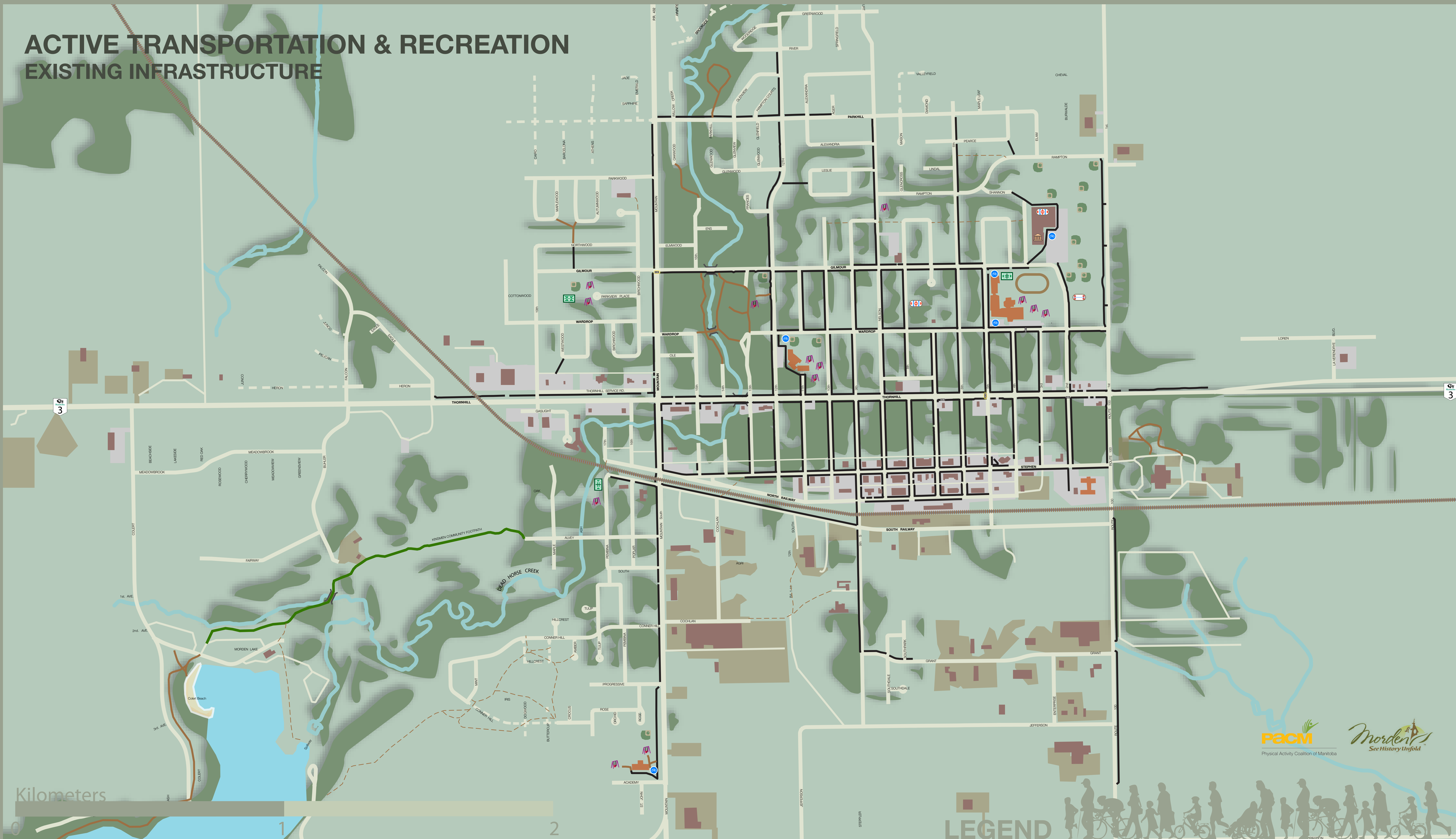
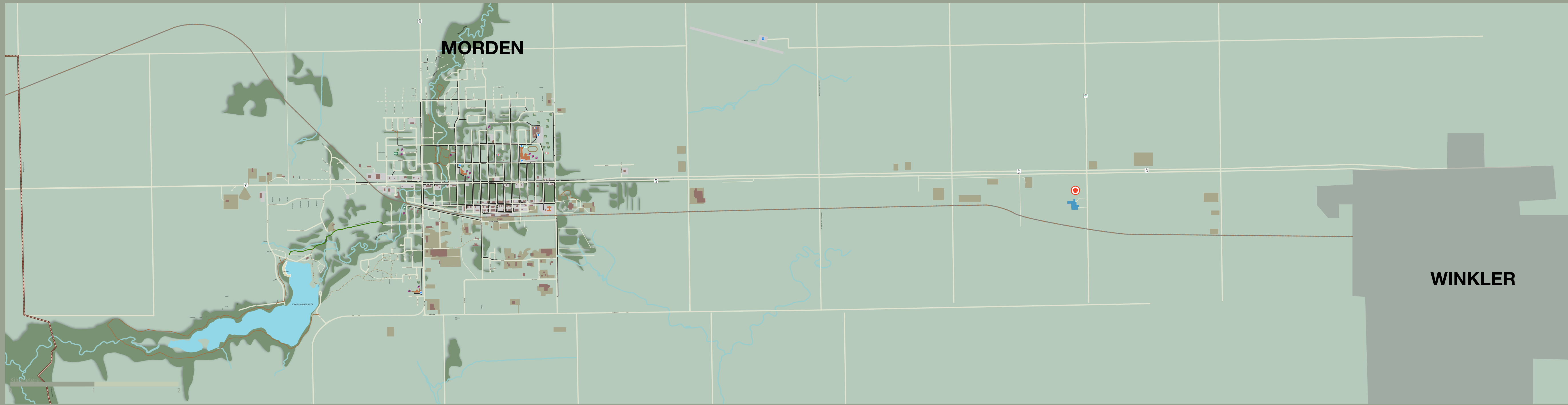


# ACTIVE TRANSPORTATION & RECREATION EXISTING INFRASTRUCTURE

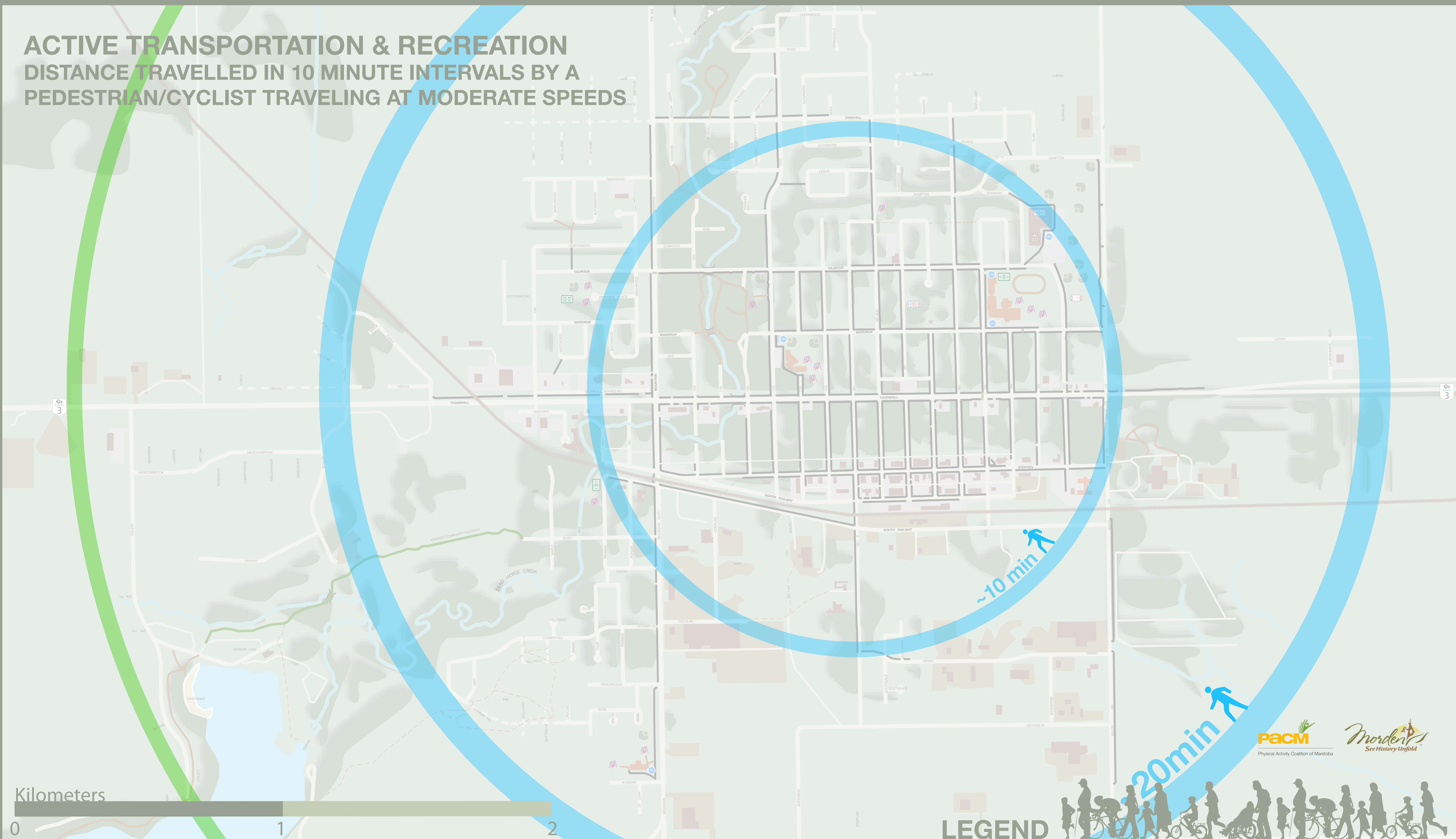


## LEGEND

- |                                    |                           |                        |
|------------------------------------|---------------------------|------------------------|
| Airport                            | Forest and Trees          | Playgrounds            |
| Baseball Diamond                   | Lakes and Rivers          | Running Track          |
| Barrier - Lines                    | Hockey Rink or Arena      | Soccer Fields          |
| Barrier - Points                   | Hospital                  | Schools                |
| Bicycle Lane or Cycletrack         | Opportunity - Lines       | Sidewalks              |
| Bicycle Parking                    | Opportunity - Points      | Trailhead or KM Marker |
| Building - Large                   | Parking Lot Paved         | Traffic Calming Point  |
| Crossing - Basic Painted           | Parking Lot Unpaved       | Traffic Calmed Block   |
| Crossing - Cyclist Specific Signal | Path - Worn (Desire Line) | Trans Canada Trail     |
| Crossing - Pedestrian Activated    | Path Multi-Use - Unpaved  | Tennis Court           |
| Curling Rink                       | Path Multi-Use - Paved    |                        |



# ACTIVE TRANSPORTATION & RECREATION DISTANCE TRAVELLED IN 10 MINUTE INTERVALS BY A PEDESTRIAN/CYCLIST TRAVELING AT MODERATE SPEEDS

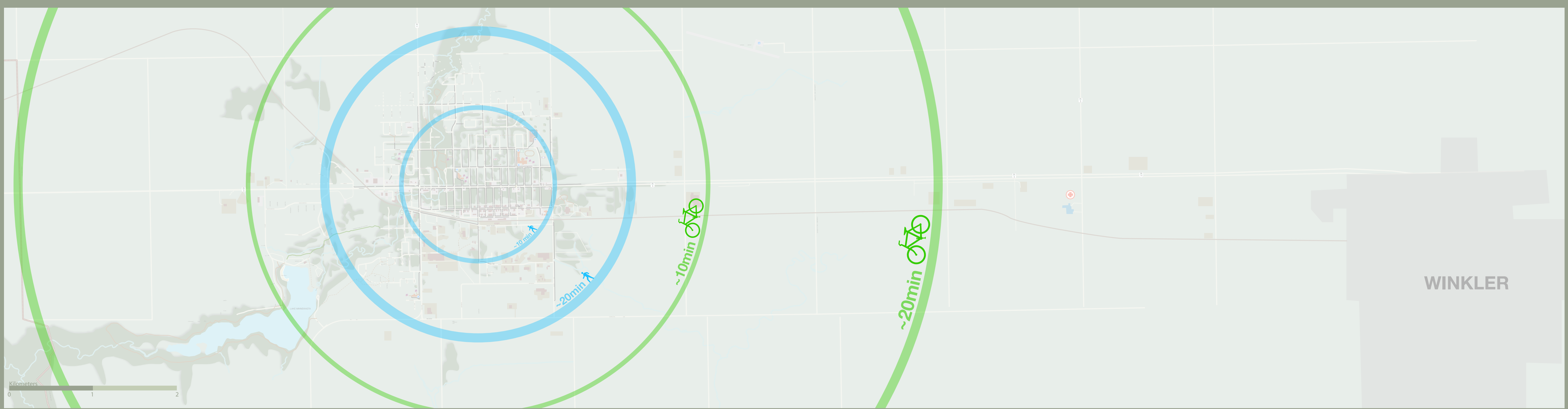


Kilometers



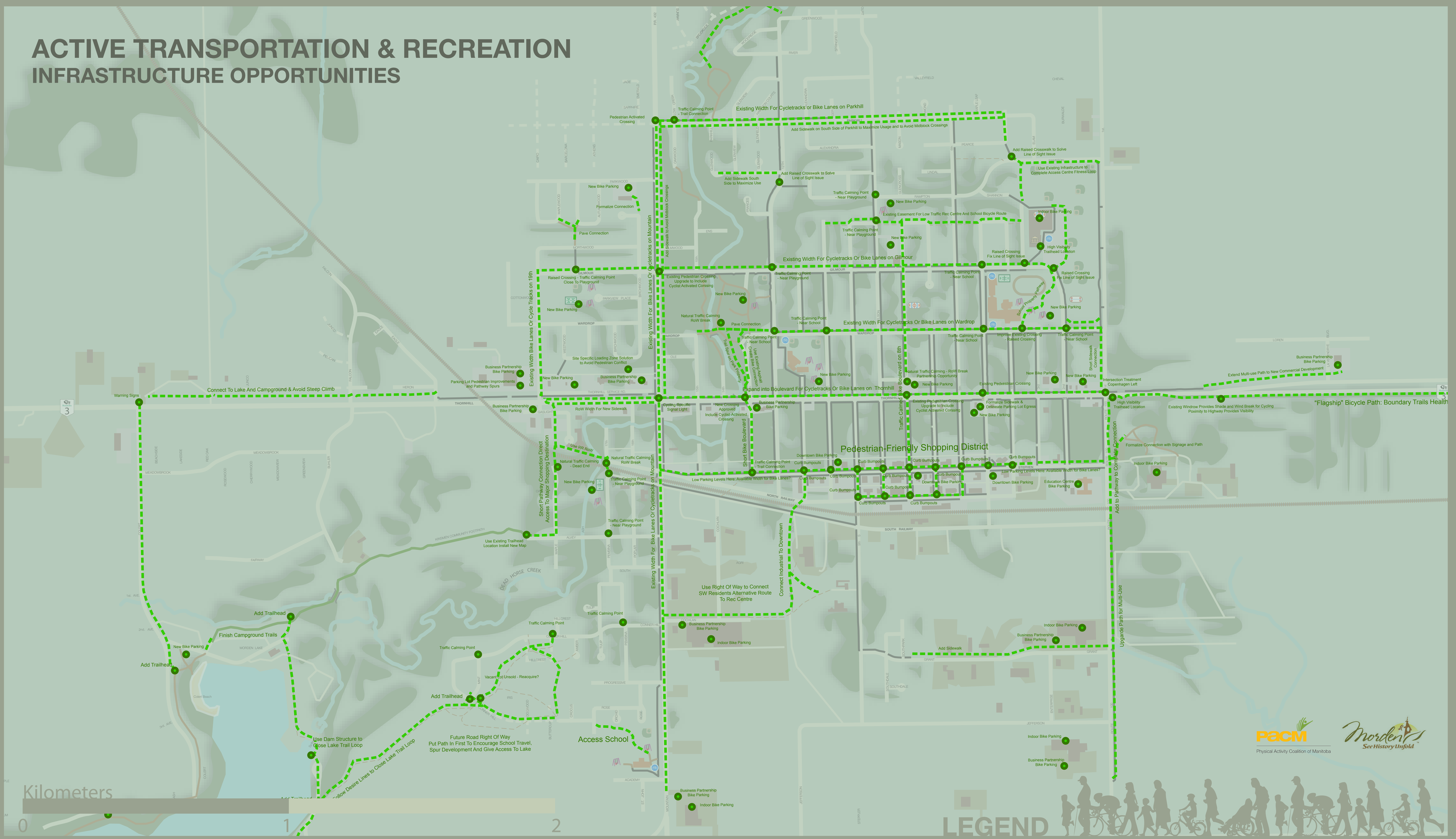
## LEGEND

- |                                    |                           |                        |
|------------------------------------|---------------------------|------------------------|
| Airport                            | Forest and Trees          | Playgrounds            |
| Baseball Diamond                   | Lakes and Rivers          | Railway                |
| Barrier - Lines                    | Hockey Rink or Arena      | Running Track          |
| Barrier - Points                   | Hospital                  | Soccer Fields          |
| Bicycle Lane or Cycletrack         | Opportunity - Lines       | Schools                |
| Bicycle Parking                    | Opportunity - Points      | Sidewalks              |
| Building - Large                   | Parking Lot Paved         | Trailhead or KM Marker |
| Crossing - Basic Painted           | Parking Lot Unpaved       | Traffic Calming Point  |
| Crossing - Cyclist Specific Signal | Path - Worn (Desire Line) | Traffic Calmed Block   |
| Crossing - Pedestrian Activated    | Path Multi-Use - Unpaved  | Trans Canada Trail     |
| Curling Rink                       | Path Multi-Use - Paved    | Tennis Court           |

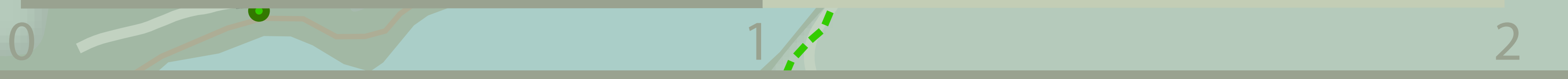




# ACTIVE TRANSPORTATION & RECREATION INFRASTRUCTURE OPPORTUNITIES

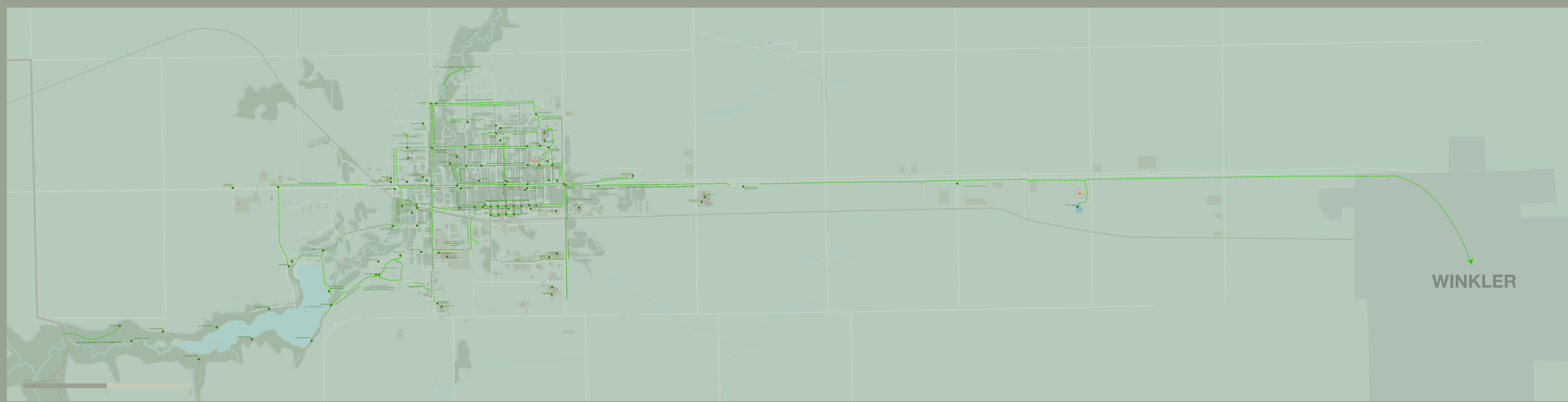


Kilometers

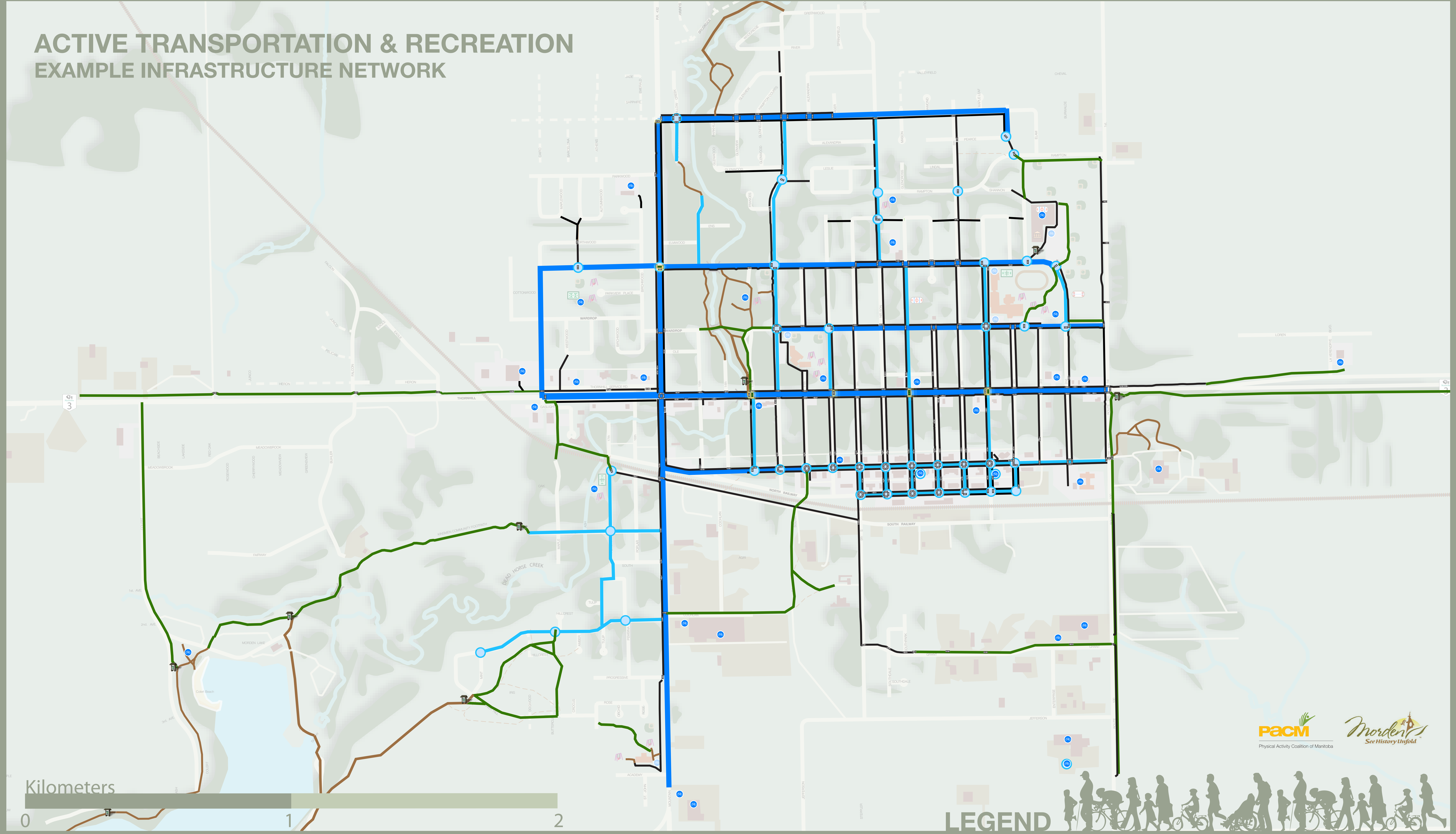


## LEGEND

- |                                    |                           |                        |
|------------------------------------|---------------------------|------------------------|
| Airport                            | Forest and Trees          | Playgrounds            |
| Baseball Diamond                   | Lakes and Rivers          | Railway                |
| Barrier - Lines                    | Hockey Rink or Arena      | Running Track          |
| Barrier - Points                   | Hospital                  | Soccer Fields          |
| Bicycle Lane or Cycletrack         | Opportunity - Lines       | Schools                |
| Bicycle Parking                    | Opportunity - Points      | Sidewalks              |
| Building - Large                   | Parking Lot Paved         | Trailhead or KM Marker |
| Crossing - Basic Painted           | Parking Lot Unpaved       | Traffic Calming Point  |
| Crossing - Cyclist Specific Signal | Path - Worn (Desire Line) | Traffic Calmed Block   |
| Crossing - Pedestrian Activated    | Path Multi-Use - Unpaved  | Trans Canada Trail     |
| Curling Rink                       | Path Multi-Use - Paved    | Tennis Court           |



# ACTIVE TRANSPORTATION & RECREATION EXAMPLE INFRASTRUCTURE NETWORK



**PACM**  
Physical Activity Coalition of Manitoba

*Morden!*  
See History Unfold



## LEGEND

- |                                    |                           |                        |
|------------------------------------|---------------------------|------------------------|
| Airport                            | Forest and Trees          | Playgrounds            |
| Baseball Diamond                   | Lakes and Rivers          | Railway                |
| Barrier - Lines                    | Hockey Rink or Arena      | Running Track          |
| Barrier - Points                   | Hospital                  | Soccer Fields          |
| Bicycle Lane or Cycletrack         | Opportunity - Lines       | Schools                |
| Bicycle Parking                    | Opportunity - Points      | Sidewalks              |
| Building - Large                   | Parking Lot Paved         | Trailhead or KM Marker |
| Crossing - Basic Painted           | Parking Lot Unpaved       | Traffic Calming Point  |
| Crossing - Cyclist Specific Signal | Path - Worn (Desire Line) | Traffic Calmed Block   |
| Crossing - Pedestrian Activated    | Path Multi-Use - Unpaved  | Trans Canada Trail     |
| Curling Rink                       | Path Multi-Use - Paved    | Tennis Court           |

